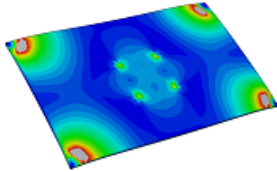


## Overly Constrained PWBs



Follow us on LinkedIn



For those of you that missed last month's webinar on Overly Constrained Boards, then you should read this [slide deck](#) or [view the recording](#) of the webinar recently presented by Gil Sharon. DfR Solutions has encountered several situations lately where boards bonded to plates, heat sinks attached to the PWB, and PWB attached to a housing have resulted in early failures. Why did this happen and what should you do? For more information please contact [Gil Sharon](#).

## Coatings and Pottings for Solar Panel Systems: Issues and Challenges

This joint webinar presented by DfR Solutions and HB Fuller/Tonsan provided insight into the issues and challenges associated with solar applications. DfR Solutions presented the issues from a reliability perspective and HB Fuller/Tonsan presented some materials that have the ability to be solutions. [Download](#) the slide deck here or [play the recording](#). If you need more information please contact [Greg Caswell](#).

## Wearables That Work: Getting It Right the First Time

What do users want from wearables – improved battery life, better data, and enhanced analytics? Yes, yes and yes. But, first & foremost, they want devices that work and devices that work as advertised. Sadly, that's not what they're getting today. The news is littered with examples of failing and marginally performing wearable electronics. This presentation is designed to help you avoid common pitfalls by understanding the wearable use environment and designing appropriately for it. [Download](#) this interesting presentation or [view the recording](#). For more information, please contact [Craig Hillman](#).



## DfR Solutions Resource Center

If you've missed any of the recent (or not so recent) DfR Solutions webinars, not to worry! Slides and recordings are posted in the [Resource Center](#) on our [website](#). Also available for your review are industry and technical papers, presentations, case studies, brochures, and other resources.

### Upcoming Webinars

**Suitability of Copper Wire Bonded ICs for High Reliability/Harsh Environment Electronics**  
Presented by Jim McLeish  
**Thursday, May 28th**  
11am and 2pm sessions available  
[Register Now](#)

**Product Reliability Alert: Red Phosphorous**  
Presented by Craig Hillman and Nathan Blattau  
**Thursday, June 4th**  
11am Session  
**One Session Only!**  
[Reserve Your Spot Now](#)

### Try Sherlock Free

[Sign Up Now for a Free Trial!](#)

Sherlock Automated Design Analysis™ software

### See You There!

#### 2015

**May 19-21:** SMTA ICSR, Toronto, Canada

**May 28:** WEBINAR: Suitability of Copper Wire Bonded ICs for High Reliability/Harsh Environment Electronics

**June 3:** SMTA- Boston Chapter, Wilmington, MA

**June 4:**

WEBINAR: Red Phosphorous Reliability Alert

**June 9:** IPC DfX Course, Chicago, IL

**June 15-16:** IMAPS Reliability of Wearable Electronics Advanced Technology Workshop, Austin, TX

### Sherlock Spotlight

See how Sherlock seamlessly integrates with Abaqus.

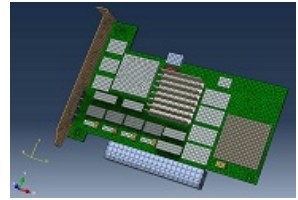
If you need some information that you cannot find on our website, or have an immediate technical need, [contact us](#).

---

### Other Interesting Items

**DfR Announces the Release of Sherlock 4.0 with Powerful New Modeling Features that Save Millions!** Read the details [here](#).

**Hardest Job in the World – Watch** what it's like to work on the top of a TV broadcasting tower.



For more information please contact **Tom O'Connor**.

---

### We're Even Easier to Find

The last section of MD-200 (aka the Intercounty Connector) has opened. Visitors traveling eastbound on MD-200 should take exit 20, Konterra Drive, and turn right (south) at the end of the ramp. Turn right at the next light onto Muirkirk Rd. Turn left in the first driveway and our office will be on your right.

Notes:

- Konterra Drive is a newly re-named section of road and some GPS/mapping systems may not reflect this change until the next update.
- There is no exit from westbound MD-200 onto Konterra Drive.

For point to point directions please visit our [website](#).

---

### Sherlock User Forum

To better accommodate the users of Sherlock Automated Design Analysis™ software, DfR Solutions has established a User Forum which will provide insight in FAQs, discussions on Sherlock releases, Feature requests, Tips and Tricks, and also where you, the user, can input your experiences.

Please go to [Sherlock User Forum](#). Once you enter your information you will need to wait for DfR confirmation.

---

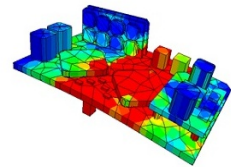
### On Location

At DfR Solutions we still believe that personal relationships are best. Our Senior Staff spend a lot of time visiting clients in order to personally ensure that their projects are going well and discussing their overall reliability needs.

If you would like a personal visit from DfR Solutions, please [Contact Us](#).

### SHERLOCK in 3D!

Click the image below to view a short video about **Sherlock's New 3D Capabilities**.



[View short video](#)

### SHERLOCK Demo

**sherlock**  
AUTOMATED DESIGN ANALYSIS™  
[Take the Sherlock Demo](#)

### Reach Your Colleagues

Learn how your business can reach more than 12,000 electronics professionals.  
[Contact Us](#).